

Santa Clara County ARES/RACES Standard Outpost Configuration Instructions

Updated for SCCo Packet Installer v130 (Outpost 3.2.0 c101)

Table of Contents

Overview	2
Preparation	2
Station Set Up/Verification	3
Step 1: Set/Verify Your Station ID	3
Step 2: Set/Verify Your TNC Settings	6
Step 3: Set/Verify the BBS.....	9
Step 4: Set/Verify the Global Message Number	12
Step 5: Verify Your Configuration Choices	13
Connection Check	14
Creating and Using Outpost Profiles.....	15
Appendix A: Standard Outpost Settings.....	16
Tools > Send/Receive Settings	16
Tools > Message Settings	17
Tools > Report Settings	18
Tools > Log Settings.....	18
Tools > General Settings	19

Overview

The first section of this document covers station set up/verification. The process involves five steps:

1. Set/Verify the station ID
2. Set/Verify your TNC settings
3. Set/Verify the BBS
4. Set/Verify the global message number
5. Verify your configuration choices

The second section covers the process for performing an initial connection check. You should perform this check to verify that the above setup is working properly.

Appendix A covers all standard Outpost settings for the Santa Clara County network. Use it to verify that all Outpost configuration options are properly set. Be sure to verify any previously created Outpost profiles because new features are added and some defaults change over time.

Technical Support: If you have any difficulty with the procedure in this document, you can get technical support on the scc-packet Yahoo user group. Visit: <http://groups.yahoo.com/group/scc-packet>

Preparation

In preparation for configuring Outpost, you need three pieces of information:

1. Your station ID
2. The type of TNC you will be using
3. The call sign of the BBS to which you will connect

To determine your station ID:

- You need your FCC call sign
- If (and only if) you are configuring the Outpost station for your agency's EOC or other agency location, you also need a tactical call sign, description, and message number prefix. These will be assigned by your agency. If you do not know the correct tactical call sign information to use, consult your EC.

To determine the call sign of the BBS you will connect to:

- View the "SCCo Packet Tactical Calls" packet bulletin or view the "BBS Assignments" section of the <http://www.scc-ares-races.org/freqs/packet-freqs.html> web page
- Look for your agency or city name and find the call sign of the primary BBS assigned to you.

Station Set Up/Verification

Start Outpost. Then use the information in the sections that follow to navigate the Outpost menus and set or verify configuration options.

Step 1: Set/Verify Your Station ID

- Go to: Setup > Station ID > Identification
- Legal:
 - User Call Sign:
 - Select an existing FCC call sign from the pull-down list or press “New” to create a new entry
 - For a new entry, enter the FCC call sign of the station
 - User Name: Verify or enter your full name
 - Message ID Prefix: Verify or enter a three-character ID, such as your initials, call sign suffix, or something similar
- Tactical: If (and only if) you are configuring Outpost for your agency's EOC or other location which has been assigned a tactical call, then:
 - Check the box next to "Use Tactical Call for all BBS interaction"
 - Tactical Call Sign:
 - Select an existing tactical call sign from the pull-down list or press “New” to create a new entry.
 - For a new entry, enter the six-character tactical call sign you were assigned
 - Additional ID Text: Verify or enter a description associated with the tactical call sign
 - Message ID Prefix:
 - For agency EOCs: Verify or enter the three-character tactical ID assigned to your agency
 - For other tactical calls: Verify or enter the three-character value assigned by your agency (usually, the last three characters of the tactical call sign)
- Make sure "Show this form on startup" is checked
 - This will remind you of the ID you are using when Outpost starts up and helps to avoid mistakes
- Press OK when done

Examples:

1) Individual

Station ID is N6MEF

Identification | BBS Logins | Signatures

Current Profile: **Outpost**

Legal

User Call Sign: **N6MEF**

User Name: **Michael E Fox**

Message ID Prefix: **MEF** (3 Characters max)

Tactical

Use Tactical Call for all BBS interaction

Tactical Call Sign:

Additional ID Text:

Message ID Prefix: (3 Characters max)

Show this form on startup

2) Tactical Call Sign for Agency EOC

Station ID is N6MEF as XNDEOC

Identification | BBS Logins | Signatures

Current Profile: **Outpost**

Legal

User Call Sign: **N6MEF**

User Name: **Michael E Fox**

Message ID Prefix: **MEF** (3 Characters max)

Tactical

Use Tactical Call for all BBS interaction

Tactical Call Sign: **XNDEOC**

Additional ID Text: **Xanadu Emergency Operations Center**

Message ID Prefix: **XND** (3 Characters max)

Show this form on startup

3) Tactical Call Sign at Field Location

Station ID is N6MEF as XNDFS1

Identification | BBS Logins | Signatures

Current Profile: **Outpost**

Legal

User Call Sign: **N6MEF**

User Name: **Michael E Fox**

Message ID Prefix: **MEF** (3 Characters max)

Tactical

Use Tactical Call for all BBS interaction

Tactical Call Sign: **XNDFS1**

Additional ID Text: **Xanadu Fire Station 1**

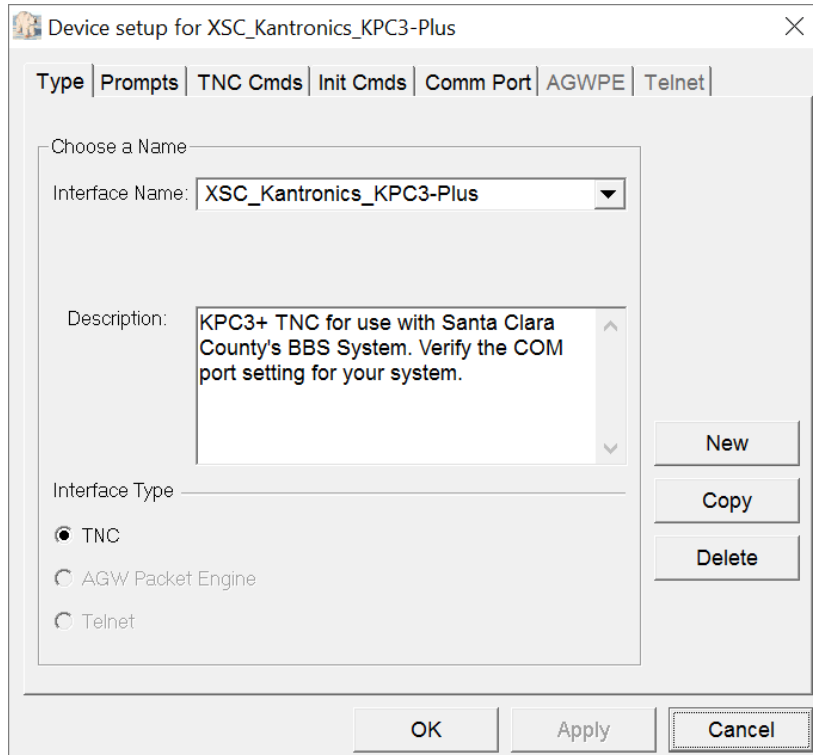
Message ID Prefix: **FS1** (3 Characters max)

Show this form on startup

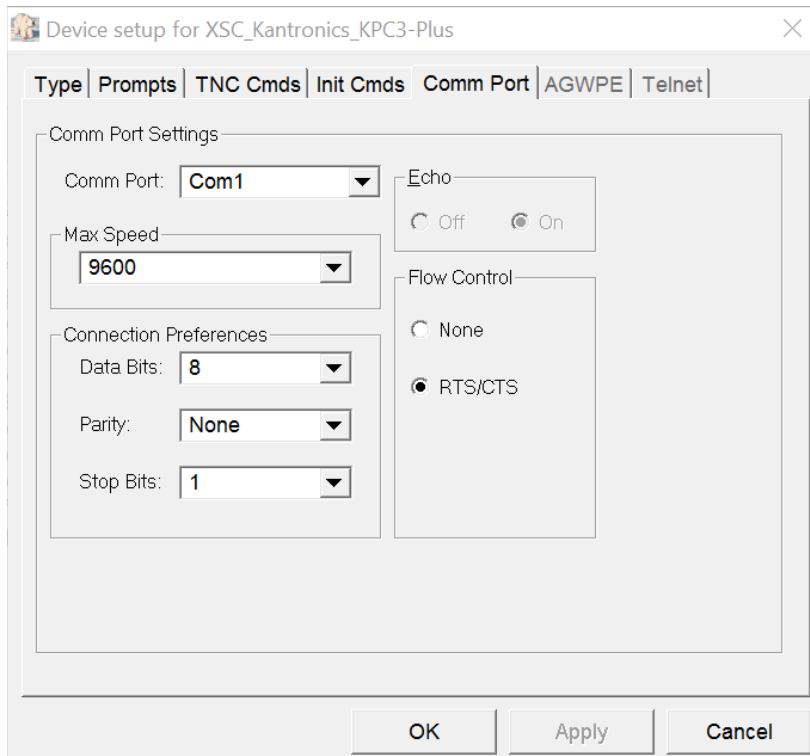
Step 2: Set/Verify Your TNC Settings

- Go to: Setup > Interface
- On the Type tab:
 - Interface Name: Select one of the pre-configured SCCo "XSC" TNC types. The SCCo setups include preconfigured TNC command lists which optimize throughput on the radio channel.

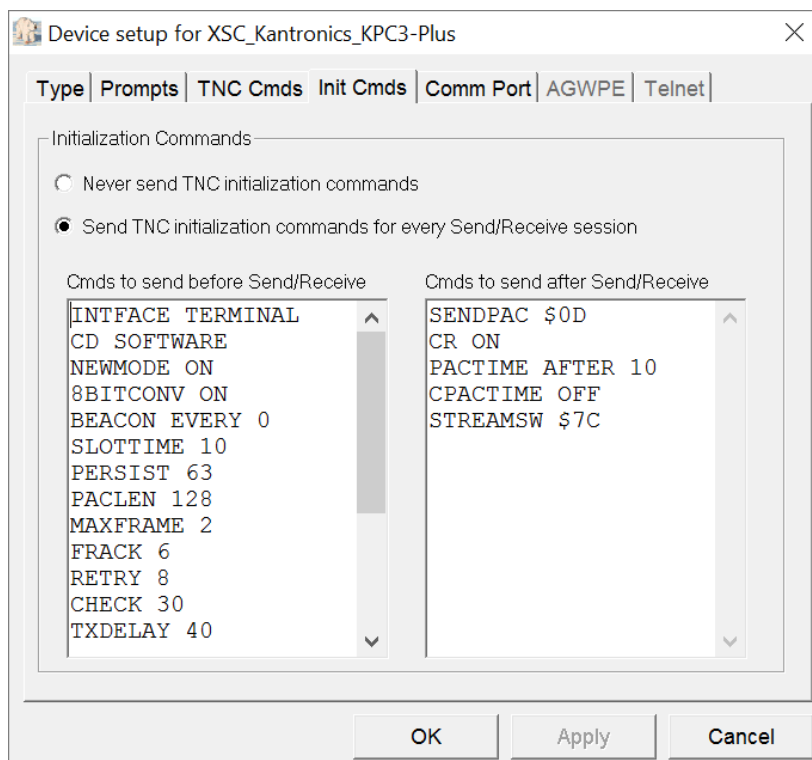
Example:



- On the "Comm Port" tab, verify:
 - Comm Port: Select the port to which the TNC is connected
 - Max Speed: Select the speed used by your TNC (usually "9600")
 - Data Bits: Always leave data bits set to "8" and make sure your TNC is set to 8 bits
 - Parity: Set to the value used by your TNC (usually "None")
 - Stop Bits: Set to the value used by your TNC (usually "1")
 - Flow Control: Always leave flow control set to "RTS/CTS"

Example:

- On the "Init Cmds" tab, verify:
 - "Send TNC initialization commands for every Send/Receive session" is selected
 - A list of commands is present under "Cmds to send before Send/Receive" and under "Cmds to send after Send/Receive"
 - Note: These commands have been preconfigured to match your TNC to the ideal parameters for the Santa Clara County network. These settings can improve your throughput by a factor of 5 times or more. For more information about what each of these commands does, see the "Standard TNC Parameter Settings" document on the packet page of the Santa Clara County website: <http://www.scc-ares-races.org/packet.html>.

Example:

Step 3: Set/Verify the BBS

- Go to: Setup > BBS
- On the Name tab:
 - Select the preconfigured SCCo BBS assigned to your city or agency. For information on which BBS to use, visit the Packet Frequencies and BBS Listing page of the Santa Clara County web site: <http://www.scc-ares-races.org/freqs/packet-freqs.html>. The "BBS Assignments" section identifies the primary and secondary BBS assignments for each city/agency.

Example:

The screenshot shows a dialog box titled "BBS setup for XSC_W1XSC-1". It has several tabs: "Name", "Prompts", "Commands", "Init Commands", "Retrieving", and "Path". The "Name" tab is selected. Inside the dialog, there are several fields and options:

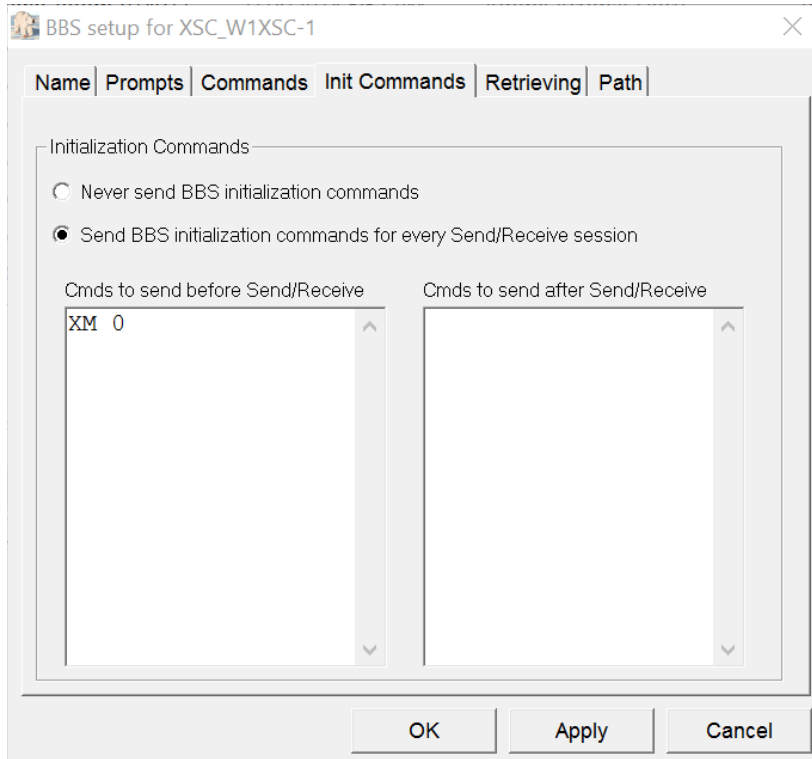
- BBS Name:** A dropdown menu showing "XSC_W1XSC-1".
- Connect Name:** A text box containing "W1XSC-1".
- Description:** A text box containing "Santa Clara County ARES/RACES Packet System. Located in San Jose. JNOS.".
- BBS Type:** Two radio button options:
 - Let Outpost determine the BBS and set up the prompts
 - User defines the BBS prompts
- Non-Identifying BBSs:** Two radio button options:
 - AA4RE BBS
 - AA4RE BBS with Tactical Call Customization
- TNC Name:** A text box with a "Set/Get TNC" button next to it.

On the right side of the dialog, there are three buttons: "New", "Copy", and "Delete". At the bottom of the dialog, there are three buttons: "OK", "Apply", and "Cancel".

If you will always use the same TNC to connect to this BBS, you can use the Set/Get TNC button to associate that TNC with this BBS. Doing so will automatically select the TNC when the BBS is selected.

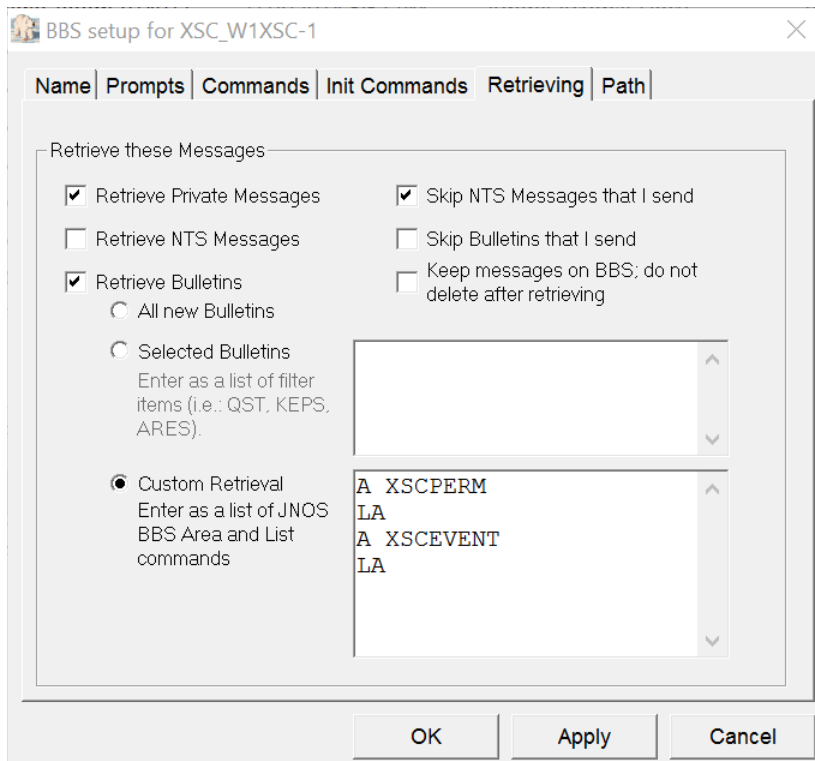
- On the “Init Commands” tab, verify:
 - “Send BBS initialization commands for every Send/Receive session” is selected
 - “Cmds to send before Send/Receive” contains “XM 0” (zero)

Example:



- On the “Retrieving” tab, verify:
 - “Retrieve Private Messages” is selected
 - “Retrieve Bulletins” is selected
 - “Custom Retrieval” is selected, and the following commands are listed:
 - A XSCPERM
 - LA
 - A XSCEVENT
 - LA

Example:

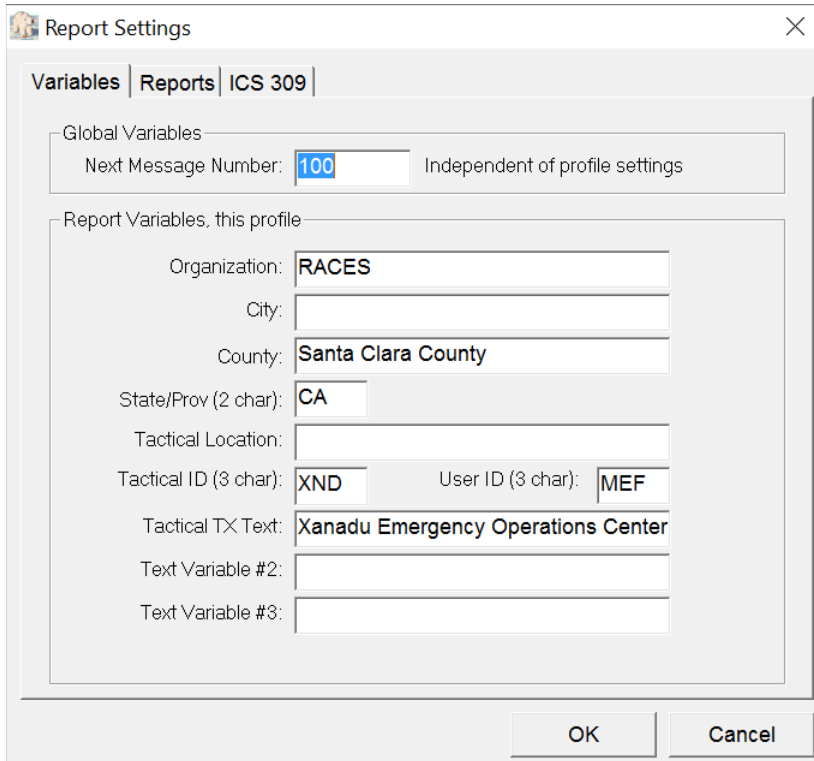


This will list and download any unread notices from the XSCPERM and XSCEVENT mailboxes.

Step 4: Set/Verify the Global Message Number

- Go to: Tools > Report Settings
- Under the Variables tab:
 - Enter the “Next Message Number” you wish to use for the next message

Example:



The screenshot shows a 'Report Settings' dialog box with the 'Variables' tab selected. The 'Global Variables' section has 'Next Message Number' set to 100, with a note 'Independent of profile settings'. The 'Report Variables, this profile' section contains the following fields:

Organization:	RACES		
City:			
County:	Santa Clara County		
State/Prov (2 char):	CA		
Tactical Location:			
Tactical ID (3 char):	XND	User ID (3 char):	MEF
Tactical TX Text:	Xanadu Emergency Operations Center		
Text Variable #2:			
Text Variable #3:			

At the bottom of the dialog are 'OK' and 'Cancel' buttons.

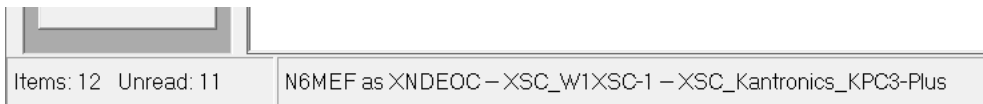
Step 5: Verify Your Configuration Choices

- Look at the status line at the bottom of the Outpost main window and confirm that your Station ID, Tactical Call Sign (if any), BBS, and TNC are listed as you have just selected.

Example:

This example shows:

- Legal call sign = N6MEF
- Tactical call sign = XNDEOC
- BBS = XSC_W1XSC-1
- TNC = XSC_Kantronics_KPC3-Plus



Connection Check

It is strongly advised that you confirm the operational nature of the system before you need to use it for a drill, event or real incident.

Check two-way communication with the BBS:

1. Connect your radio, TNC and PC and turn them on.
2. Tune the radio to the correct frequency for the BBS you have selected.
3. Compose a New message to yourself and press Send. The message should now be in your Out Tray.
4. Press Send/Receive to initiate a BBS session and cause the message to be sent to the BBS.
5. Press Send/Receive again to initiate a second BBS session to receive the message from the BBS.
6. View the message in the In Tray.

If you have difficulty communicating with the TNC, you can check connectivity manually, as follows:

1. From Outpost, select **Tools > Interactive Packet > Serial / Comm Port**.
2. Verify the Ipserial.exe program starts.
3. If you have already configured the Comm port in Outpost, you can transfer the settings to Ipserial. Select **Tools > Get Comm Port Settings from Outpost**. Otherwise, select **File > Comm Port Settings** and configure the Comm port as described above.
4. In the Ipserial main window, press **Connect** to connect to the TNC.
5. Verify the TNC prompt is displayed.
6. Type "help" or other TNC commands to verify two-way communication with the TNC.
7. You can also try to manual connect to your BBS with the TNC "connect" command
8. Exit Ipserial when you are finished.

If you are using the AGW Packet Engine (software TNC), you can check connectivity manually, as follows:

1. From outpost, select **Tools > Interactive Packet > AGW Packet Engine**
2. Verify the Ipagwpe.exe program starts.
3. Select **File > AGWPE Settings** and enter the appropriate values.
4. In the ipagwpe main window, press **Connect** to connect to the software TNC.
5. Try to manually connect to your BBS.
6. Exit Ipagwpe when you are finished.

That's it. Thanks for helping to keep the network operating smoothly!

Creating and Using Outpost Profiles

Outpost profiles are a powerful way to manage multiple set of Outpost settings. Each profile contains all the settings in the Tools menu. They also contain the selection of User ID, BBS, and Interface (TNC), but not the configuration details of the User ID, BBS or Interface. Users can create multiple profiles, each containing multiple differences in settings. By switching profiles, multiple settings are changed with one click.

But with great power comes great responsibility! The SCCo Packet Installer always resets the default “Outpost” profile with the current county standard settings (defined in Appendix A). But the installer does NOT update user-defined profiles. This means that newly added configuration options or changes to the configuration standard will NOT appear in user-defined profiles. Users need to manually update each of their user-defined profiles to be consistent with the county standard settings. Therefore, if used improperly, profiles can create more work than they save.

Here are a few general recommendations for successful use of profiles:

- If you want to switch between your call sign and a tactical call sign, don’t use a profile to do that. Instead, check the “User Tactical Call ...” box on the Setup > Identification dialog box.
- If you want to switch BBSs or TNCs, don’t use a profile to do that. Instead, select the BBS or TNC on the pull-down menu in the Setup > BBS or Setup > Interface dialog boxes, respectively.
- If you need to apply settings which are different from the county standard, then create your own user-defined profile. This leaves the default “Outpost” profile with the default settings as a readily available reference and preserves your user-defined profile during software upgrades. (But it also means your user-defined profile needs to be checked manually after software upgrades!)
- Use profiles when you need to switch between multiple sets of settings in the Tools menu.
- If you create your own profiles, then ALWAYS review ALL settings in ALL profiles after Outpost software upgrades to make sure they are consistent with the county standard (or differ only where intended).

Appendix A: Standard Outpost Settings

All users of the Santa Clara County packet network are expected to install Outpost and PacFORMS with the integrated installer. The integrated installer sets all the defaults to optimize the usage of the shared radio channel for all users. You can use the information in this appendix to better understand these settings and to verify that all your Outpost settings are set per the county standard.

Tools > Send/Receive Settings

Automation	<p>Automation</p> <p>(*) Manual. Initiate each send/receive session manually.</p> <p>[] Send a message immediately when it is complete</p> <p>Send/Receive Button Setup</p> <p>(*) Send/Receive</p>
Receiving	<p>When Receiving Messages</p> <p>No recommendation</p>
Printing	<p>Automatically print during the Send/Receive Session</p> <p>[x] Print message headers</p>
Notifications	<p>During the Send/Receive Session</p> <p>[x] N0: Application errors</p> <p>[x] N1: Problems that need immediate attention to proceed</p> <p>[x] N2: Unexpected BBS disconnect problems</p> <p>[x] N3: Other non-critical issues</p> <p>[x] Play this sound on notification: sound136.wav</p>
Other	<p>During the Send/Receive Session</p> <p>[x] Show the TNC session Window during Send/Receive</p>

Tools > Message Settings

<p>New Msgs</p>	<p>Setting up a new message</p> <p>(*) Set default to PRIVATE</p> <p>[] Create and send NTS messages as Private messages</p> <p>[] Default Destination (Not recommended. This usually results in the user forgetting to check the To: field and sending messages to the wrong person)</p>
<p>Msg Numbering</p>	<p>Outbound Message Identification:</p> <p>[x] Add Message Number to Subject Line</p> <p>(*) with hyphenation ...</p> <p>[x] Add message number suffix</p> <p>[] Add message number separator</p> <p>Inbound Message Identification (Local ID)</p> <p>[x] Assign a local message number to inbound messages ...</p>
<p>Replies/Fwds</p>	<p>Replies and Forwards</p> <p>(*) Set default to PRIVATE for replies or forwards</p> <p>[x] Close original message on reply or forward</p>
<p>Receipts</p>	<p>Tracking Messages</p> <p>[] Always request a Delivery Receipt</p> <p>[] Always request a Read Receipt</p> <p>Auto-Receipts</p> <p>[x] Auto-Delivery Receipt</p> <p>[] Auto-Read Receipt</p>
<p>Deleting</p>	<p>Deleting Messages</p> <p>[x] Prompt before permanently deleting a message</p>

Adv	<p>External Message Service Settings</p> <p><input checked="" type="checkbox"/> Automatically start the Opdirect External Message Service</p> <p>Open locally created PacFORMS message in its native program, if the message is newly submitted</p> <p>(*) Never</p> <p>if the message was previously submitted</p> <p>(*) Prompt</p> <p>Open a received PacFORMS message in its native program</p> <p>(*) Always</p>
------------	--

Tools > Report Settings

Variables	<p>Global Variables</p> <p>Next Message Number: Set to your preferred next message number. Three or four digits is recommended. Most people start with 100 on a new installation.</p>
Reports	No recommendation
ICS 309	<p>Automation</p> <p>(*) No Automation (initially)</p> <p>We recommend that you experiment with the ICS 309 functionality before turning on automation. Once you're comfortable with configuring the ICS 309, automation can help ensure that you always have a recent printed copy of the log, even if your PC crashes.</p>

Tools > Log Settings

Log Settings	<p>Options</p> <p><input checked="" type="checkbox"/> L1: Send/Receive Session window logging</p>
---------------------	--

Tools > General Settings

Startup	Program Startup <input checked="" type="checkbox"/> Show Station ID form on startup <input checked="" type="checkbox"/> PC Time Check Custom Folder Labels Name the folders as desired.
Addressing	Hierarchical Address Settings <input type="checkbox"/> Use hierarchical address Continent parameter in validation
Profiles	Global Settings Save Profile Changes when switching profiles or exiting Outpost (*) Prompt
Miscellaneous	Miscellaneous <input checked="" type="checkbox"/> Auto-print with message headers