

Packet Install #48 Overview

Santa Clara County RACES

15 January 2013

Jim Oberhofer KN6PE

Michael Fox N6MEF

Phil Henderson KF6ZSQ

Agenda


SCC Packet install #48 – what's new with...

1. BBS Environment
2. PacFORMS v3.8
3. Outpost v2.7
4. After you do the installation

BBS Changes

Changes associated with the BBS environment

Area	Old Setting	New Setting
Message Areas	PERM, 30DAYS	<ul style="list-style-type: none"> XSCPERM – stores messages of interest for Santa Clara County Packet Users XSCEVENT – stores messages that are relevant to any drill or event in progress
Session Hang timeout	5 minutes	3 minutes
TNC Settings	RETRY = 10 TXDELAY=30	RETRY=8 TXDELAY=40
City BBS changes	<ol style="list-style-type: none"> Milpitas moves from W1XSC to W4XSC Several cities have a new secondary BBS assignment http://www.scc-ares-races.org/freqs/packet-freqs.html	



#	Agency	Prefix	Primary BBS	Secondary BBS
Santa Clara County Cities and Agencies				
1	CAL FIRE VIPs - Santa Clara Unit	SCU	W2XSC	W1XSC
2	Campbell, City of	CBL	W1XSC	W4XSC
3	County Communications Center	CCC	W1XSC	W4XSC
4	Cupertino, City of	CUP	W1XSC	W4XSC
5	Gilroy, City of	GIL	W2XSC	W1XSC
6	Hospitals (all SCCo) & DEOC	HOS	W2XSC	W1XSC

PacFORMS Changes

1. New Logistics Form
2. A note on PacFORMS and early versions of FireFox
 - The current version of Firefox is version 18.0. If Firefox is your default browser and your version of Firefox is older than version 4.0, then PacFORMS may not open properly.
 - The workaround is to either...
 - (i) upgrade Firefox (version 12.0 or greater is recommended) or
 - (ii) switch to Internet Explorer.

Outpost v2.7 Changes

Top 5 changes to Outpost

1. Outpost on Vista, Windows 7, and Windows 8
2. User Profiles
3. Previous and Next message viewing
4. Kiss-Off and Host-off
5. Adds a Forgetful PC / Time check

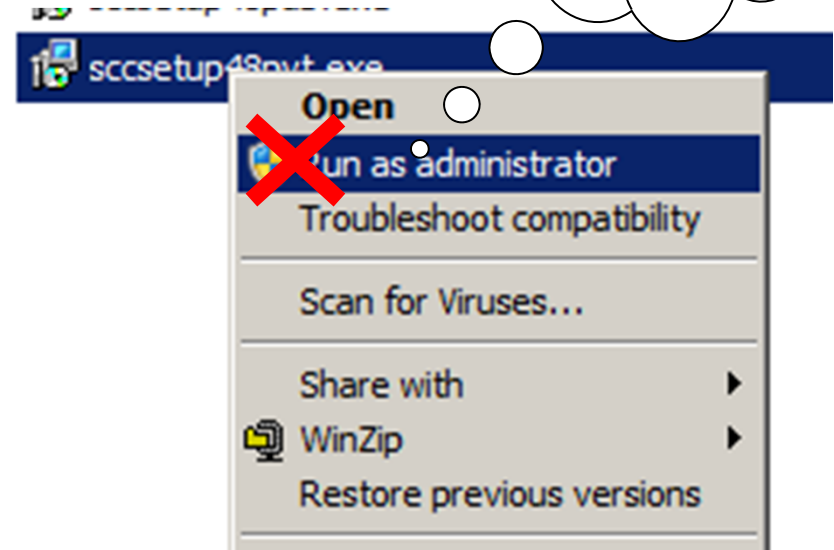
Vista, W7, and W8 Admin Access

Outpost v2.7 Changes (ER#951)

No longer needed!

Resolved for Vista/W7/W8 users!

1. With SCC Install #48, you no longer need to run the installer or any of the installed Outpost programs as Administrator. Outpost now installs like everyone else.
2. It will still pop up the Security Warning “**The publisher could not be verified...**”; just press **Run** to continue.
3. The install process will copy all your Outpost data...
 - For Vista, W7, W8
 - From: C:\ProgramData\SCCo Packet\
 - To: C:\Users\<user>\AppData\Roaming\SCCo Packet\
 - For Windows XP, NT, 2000, 98se
 - From: C:\Documents and Settings\All Users\Application Data\SCCo Packet\
 - To: C:\Documents and Settings\<user>\Application Data\SCCo Packet\
 - Note: <user> is your logon name
4. After the installation is complete, just double-click on the Outpost icon and run your program as usual.



Vista, W7, and W8 Admin Access

Outpost v2.7 Changes (ER#951)

After the install

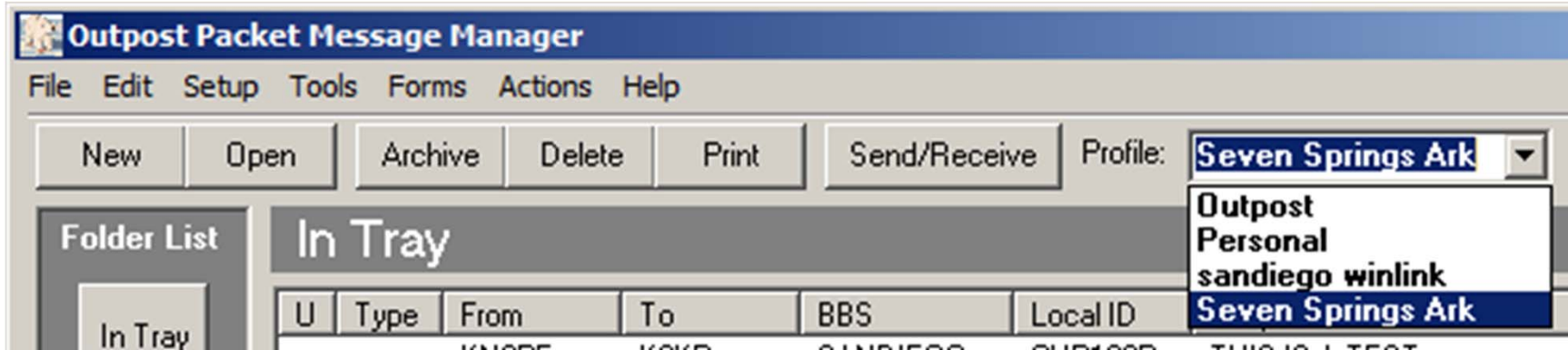
1. The installer will not delete the old Outpost directory. Once you confirm that you are up and running with the new install, please manually delete the old data directory.

Considerations

1. This install moves the Outpost data from a common data area to a user-specific area. This location is associated with the person (or account) that was logged in at the time of the installation.
 - For users or organizations that run Outpost under a single log-in, this is not a problem.
 - For users or organizations that run Outpost under individual log-ins, problem... the data is not shared. . You can:
 1. Create a generic PC Account (for instance, Outpost) and run the installer from that account.

Selectable Profiles

Outpost v2.7 Changes (ER#1017)



- Profiles are different combinations of Outpost settings stored under a profile name.
- Profiles are user-defined based on your specific needs. Any number of Profiles can be created.
- Once defined, you can switch from one profile to another with Outpost restarting with the new settings. Your settings are saved in the current profile prior to loading the new profile.
- What's delivered, and typical uses:
 - Emergency use. The **Outpost** Profile is set up with the default Santa Clara County Settings.
 - Casual use. The **Personal** Profile is a delivered example with many of the Santa Clara County Settings turned off.

NOTE!! Other than setting your ID, TNC, BBS, etc., and always use the *Outpost* profile for SCC EmComm!

Selectable Profiles

Outpost v2.7 Changes (ER#1017)

Considerations

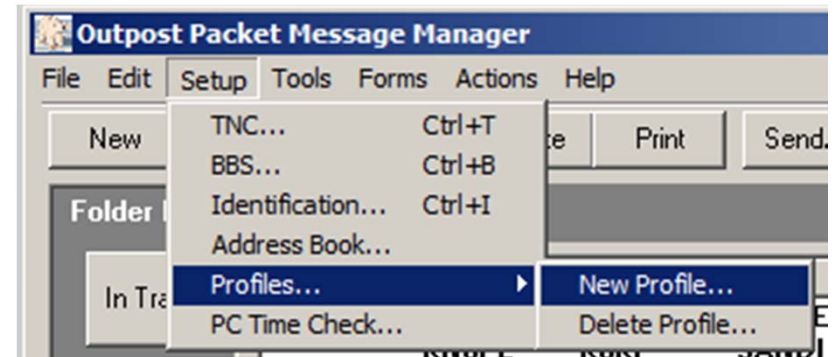
- Creating and Deleting a new Profile

Setup > Profiles > New

- You will be prompted for a new Profile name.
- The new Profile picks up all the previous settings as a starting point.
- All changes after this are saved to this new profile. Your other profiles are not impacted.

Setup > Profiles > Delete

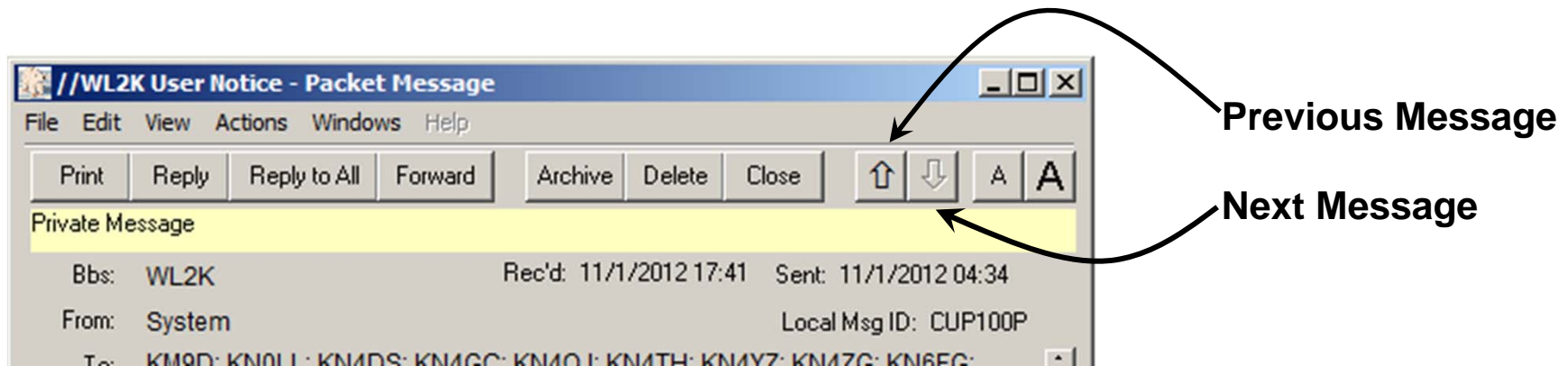
- Pick the profile to delete, and press OK. The last profile in the list is loaded.
 - If all profiles are deleted, Outpost will automatically create a profile named “Outpost” with a default settings (Not SCC’s settings).
- Beyond Install #48, during the next County Install,
 - The **Outpost** Profile will be replaced with the recommended profile including any changed settings.
 - All other Profiles, including the **Personal** Profile, will not be touched.



Message Navigating

Outpost v2.7 Changes (ER#1022)

- Up and Down arrows on message forms allow you to move to the previous or next message in the currently displayed folder.



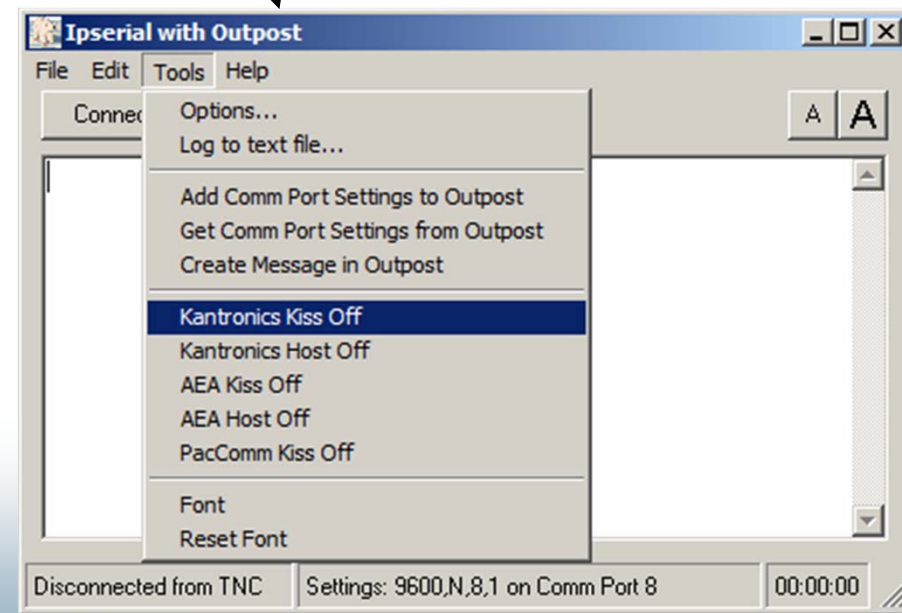
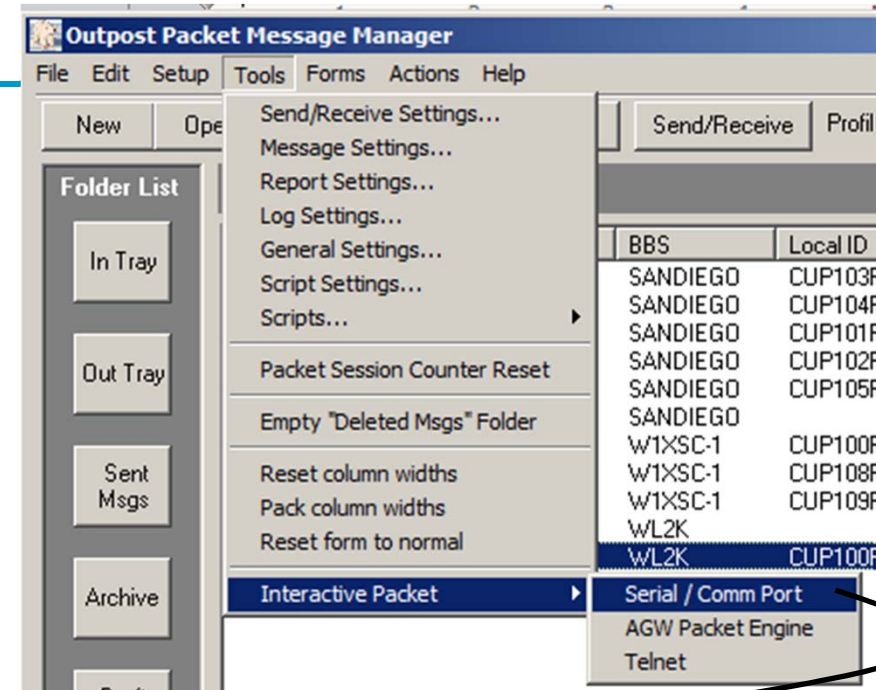
TNC KISS Off, Host Off

Outpost v2.7 Changes (ER#1012)

Turning a TNC's KISS mode on is easy; turning it off has been a problem ☹.

If you think a TNC is in KISS Mode,

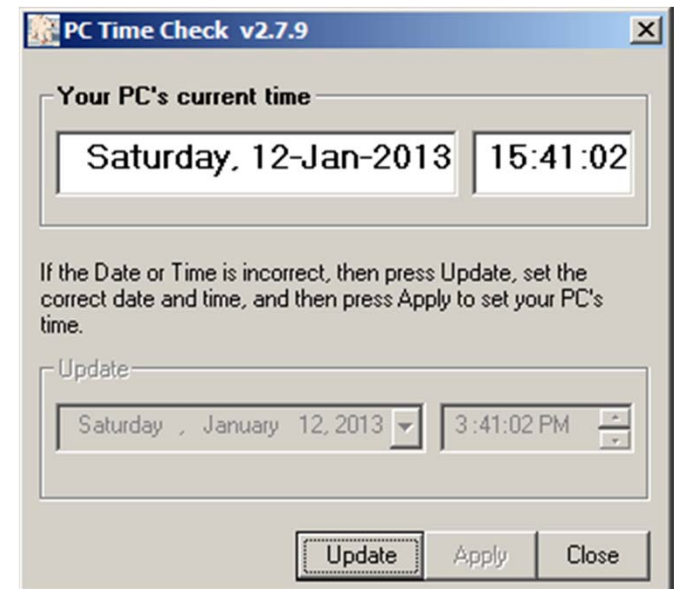
- Run Ipserial (Serial terminal emulator)
- Set up the TNC configurator, press **Connect**.
- Select **Tools**, and the correct Kiss Off option.
- The TNC should show the normal power-on message.
- If that does not work, when in doubt, pull the TNC battery out (to hard reset the TNC)



Forgetful PC / Time Check

Outpost v2.7 Changes (ER#1025)

- There are times when the PC you are using is not up to date with the current date and time.
- This is a big problem during activations where message time-stamping is critical in the event a message-based historical picture needs to be recreated.
- Use the PC Time Check option as a reminder to check your PC's current time before your message handling.
 - **Setup > PC Time Check** – runs the time check
 - **Tools > General Settings** – schedules the time check when Outpost starts up.
- To update your PC Time, press **Update**, and then change the date and/or time. Press **Apply** or **Cancel**



After the install...

Once you complete the install, please do the following:

1. Reset your Comm Port Setting.
Go to... **Setup > TNC**, pick your TNC type
Go to... Tab 4 "**TNC Comm Port**", select your Comm Port, and press **OK**,
regardless of what it says.
2. Delete the old Outpost Data Directory...
 - For Vista, W7, W8, delete this directory
C:\ProgramData\SCCo Packet
 - For Windows XP, 2000, 98se , delete this directory
C:\Documents and Settings\All Users\Application Data\SCCo Packet
 - If you have problems, don't worry; we will clean it up with the next SCCo Installation.
3. Before the drill, make sure you have run at least one Outpost **Send/Receive** session to retrieve any outstanding messages that may be addressed to you so they do not get retrieved (and clog up the frequency) during the next drill or event.

Need help or more information?

For SCC Tech Support

- SCC Packet Network questions... scc-packet @ yahoogroups.com
- SCC Packet Page... <http://www.scc-ares-races.org/packet.html>
- SCC Packet users group... <http://groups.yahoo.com/group/scc-packet>

For general Outpost questions

- Outpost... OutpostPacket @ yahoogroups.com
- Outpost User Guide... **Start > SCCo Packet > Outpost User Guide**
 - A complete description of all features, forms, fields, and controls in Outpost
- HOW-TO pages... www.outpostpm.org/howto.html
 - Specific Outpost How-To's for the most common tasks performed

Thank you

Any Questions?

